

# Aladdin BI-FABRIC

The BI-FABRIC 2 (1'x2') and BI-FABRIC 4 (1'x4') are flexible & light weight Bi-Color LED panels for professional use in television, movie and photographic production with an outstanding light quality and a CRI and TLCI over 97.

The BI-FABRIC is the cinematographer's choice for a small, lightweight and powerful lighting tool for many applications like a portable interview light or to hide in narrow spaces like elevators, cars or even inside objects for product photography.

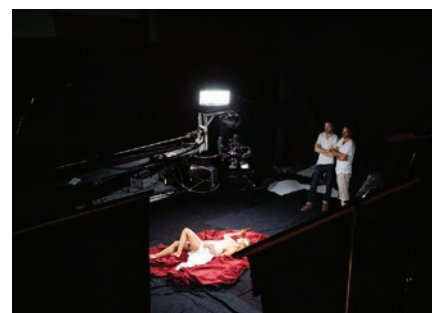
The kit includes almost everything you need to get shooting. Frames, Ball Head, diffusers, softbox, wired dimmer with DMX, Lumen Radio, and Bluetooth, extension cables and power supply all fit into the included soft case.

The BI-FABRIC product runs from a universal voltage power supply or directly from a camera battery with the mounted V-lock or Gold-Mount dimmer plate. The BI-FABRIC comes with a dimmer tapped for a 16mm stud, to mount it onto your stands or clamps. Take these lights wherever you go, mount wherever you want, and power however you choose.

We strive to help our customers be at their most creative potential by building the finest lighting tools for television, video, and motion picture production.

## FEATURES:

- Flexible
- Portable
- Light Weight
- Ready to Mount Anywhere
- High CRI / TLCI
- Bi-Color 2850K to 6098K

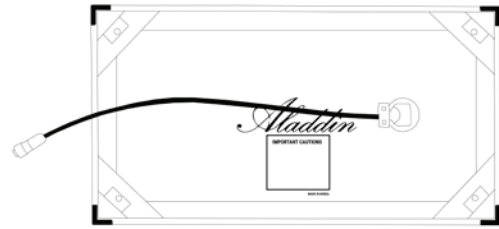


**BI-FABRIC 2**  
**1x2 (100W)**

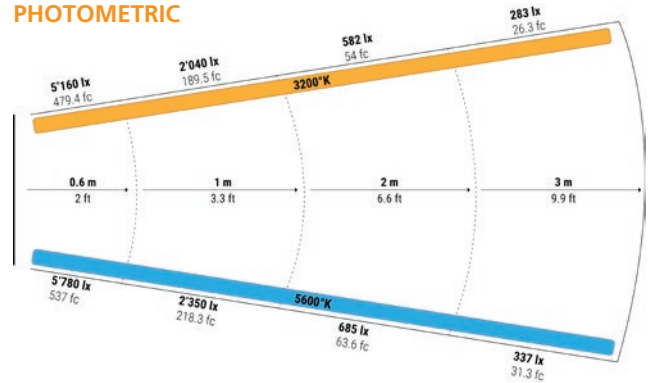


**BI-FABRIC 4**  
**1x4 (200W)**

# BI-FABRIC 2 SPECIFICATIONS



## PHOTOMETRIC



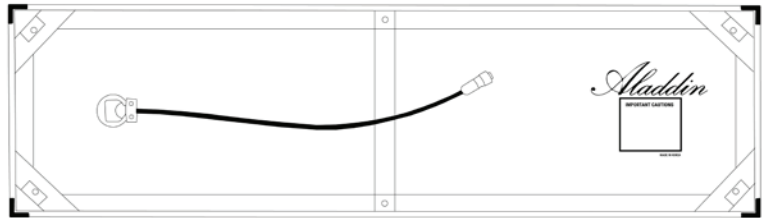
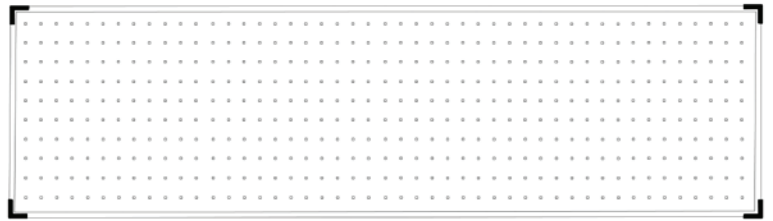
### BI-FABRIC 2 V-Mount Kit w/Case - Bi-Color (3000K-6000K) - 1'X2', 100W

Item Number	1005085
Part Number	FB-2BI-KITC-VM
Inside the Box	1 x LED Panel 2ft (Bi-Color), 1 x AC Power Supply, 1 x Dimmer Unit (V-Lock Battery Plate with DMX & Lumen Radio), 1 x X-Bend Holder, 1 x Hard Frame, 1 x Ball Head Stand Mount, 1 x Extension Cable (6 ft), 1 x Diffuser, 1 x BI-FLEX 2 Soft Case, 1 x Pouch

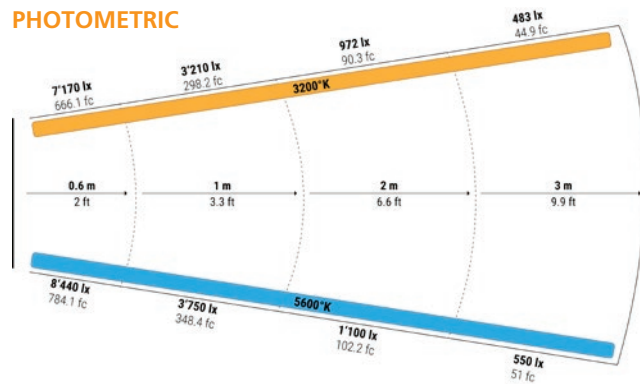
### BI-FABRIC 2 Gold-Mount Kit w/Case - Bi-Color (3000K-6000K) - 1'X2', 100W

Item Number	1005084
Part Number	FB-2BI-KITC-GM
Inside the Box	1 x LED Panel 2ft (Bi-Color), 1 x AC Power Supply, 1 x Dimmer Unit (Gold-Mount Battery Plate with DMX & Lumen Radio), 1 x X-Bend Holder, 1 x Hard Frame, 1 x Ball Head Stand Mount, 1 x Extension Cable (6 ft), 1 x Diffuser, 1 x BI-FLEX 2 Soft Case, 1 x Pouch

# BI-FABRIC 4 SPECIFICATIONS



## PHOTOMETRIC



### BI-FABRIC 4 V-Mount Kit w/Case - Bi-Color (3000K-6000K) - 1'X4', 200W

Item Number	1005083
Part Number	FB-4BI-KITC-VM
Inside the Box	1 x LED Panel 4ft (Bi-Color), 1 x AC Power Supply, 1 x Dimmer Unit (V-Lock Battery Plate with DMX & Lumen Radio), 1 x Metal Frame w/ 16mm Stud, 1 x Extension Cable (6 ft), 1 x Diffuser, 1 x BI-FLEX 4 Soft Case, 1 x Pouch

### BI-FABRIC 4 Gold-Mount Kit w/Case - Bi-Color (3000K-6000K) - 1'X4', 200W

Item Number	1005082
Part Number	FB-4BI-KITC-GM
Inside the Box	1 x LED Panel 4ft (Bi-Color), 1 x AC Power Supply, 1 x Dimmer Unit (Gold-Mount Battery Plate with DMX & Lumen Radio), 1 x Metal Frame w/ 16mm Stud, 1 x Extension Cable (6 ft), 1 x Diffuser, 1 x BI-FLEX 4 Soft Case, 1 x Pouch

# ACCESSORIES

Part Number		BI-FABRIC Accessories
<b>1' x 2' Accessories</b>		
1X2-SBX	Softbox 1'X2'	Add the Soft Box to your BI-FABRIC 2 or ALL-IN 2 1'X2' panel to get a softer look. Simply velcro it to the panel and put the diffuser on it as well and you are ready to go. The inside of the Soft Box is equipped with a reflective silver surface.
1X2-SBX-DIF	Softbox Diffuser 1'X2' fits 1X2-SBX	Spare softbox diffuser for the 1X2-SBX. Please note: This diffuser fits the 1'X2' softbox only.
1X2-SBX-GRID	Softbox Grid 1'X2' fits 1X2-SBX	Add this Grid to your Aladdin Softbox to get more light control with your BI-FABRIC 2 or ALL-IN 2 panel. With the Grid, your light source will be channeled toward your preferred direction without light spread.
1X2-BALL	Ball for 1'X2'	Put in your BI-FABRIC 2 or ALL-IN 2 panel and you are ready to go. With the Aladdin Ball you get an evenly soft light with a huge angle.
1X2-BALL-FR	Frame for 1'X2' Ball	Frame for 1'X2' Ball
1X2-BALL-DIF	Ball Diffuser for 1'X2' fits 1X2-BALL	Spare diffuser for the 1X2-BALL.
1X2-FR-GRID	Grid for 1'X2' Frame	Grid for the 1'X2' Aladdin frame. Control your light output with this grid to get a smaller beam angle.
1X2-XB	X-Bend Holder 1'X2' for BI-FABRIC 2 and ALL-IN 2 panels (ALL-BHAD not Included)	The X-Bend Holder gets attached to the back of the BI-FABRIC 2 or ALL-IN 2 1'X2' panel. In the middle of the X-Bend holder is a hole to attach it to the Ball Head ALL-BHAD (not included).
1X2-FR-KIT	Polycarbonate Frame 1'X2' with Ball Mount and Diffuser	Lightweight Frame for 1'X2' LED panels, including the double axis ballhead to attach to your stand.
1X2-FR-DIF	Diffuser fits 1'X2' Frame and X-Bend	This diffuser can be mounted directly on the 1'X2' Aladdin frame. The diffuser covers the open LEDs and gives a softer light output.
<b>1' x 4' Accessories</b>		
1X4-WSBX	1'X4' Wide Softbox with Diffuser	The wide softbox can be installed directly on the 1'X4' Metal Frame for the BI-FABRIC 4. It gives you more control of the light beam angle and an even softer light source as well. A diffuser is included.
1X4-WSBX-DIF	1'X4' Wide Softbox Diffuse	Spare diffuser for the 1'X4' Wide Soft box with diffuser FL200BIXBCWDF.
1X4-WSBX-GRID	1'X4' Wide Softbox Grid	Grid for the 1'X4' Wide Softbox. Control your light output with this grid to get a smaller beam angle.
1X4-RSBX	1'X4' Round Softbox with Diffuser	This very smart round softbox design allows you to get an extremely soft light output. The softbox can be installed onto the 1X4 Metal Frame for the BI-FABRIC 4.
1X4-RSBX-DIF	1'X4' Round Softbox Diffuser	Spare diffuser for the 1'X4' Round Soft box
1X4-FR-KIT	1'X4' Metal Frame with 16mm Stud	The metal frame comes with a 16mm stud, to connect it to any regular C-stand and other tripods. After attaching the BI-FABRIC 4 to it you can also use other tools like the diffuser with it.
1X4-FR-DIF	1'X4' Frame Diffuser	This is an easy to attach front diffuser. You simply put it over the extensions of the frame.
1X4-FR-GRID	1'X4' Frame Grid	Grid for the 1'X4' Frame. Control your light output with this grid to get a smaller beam angle.



**BI-FABRIC 2**  
1x2 (100W)



**BI-FABRIC 4**  
1x4 (200W)