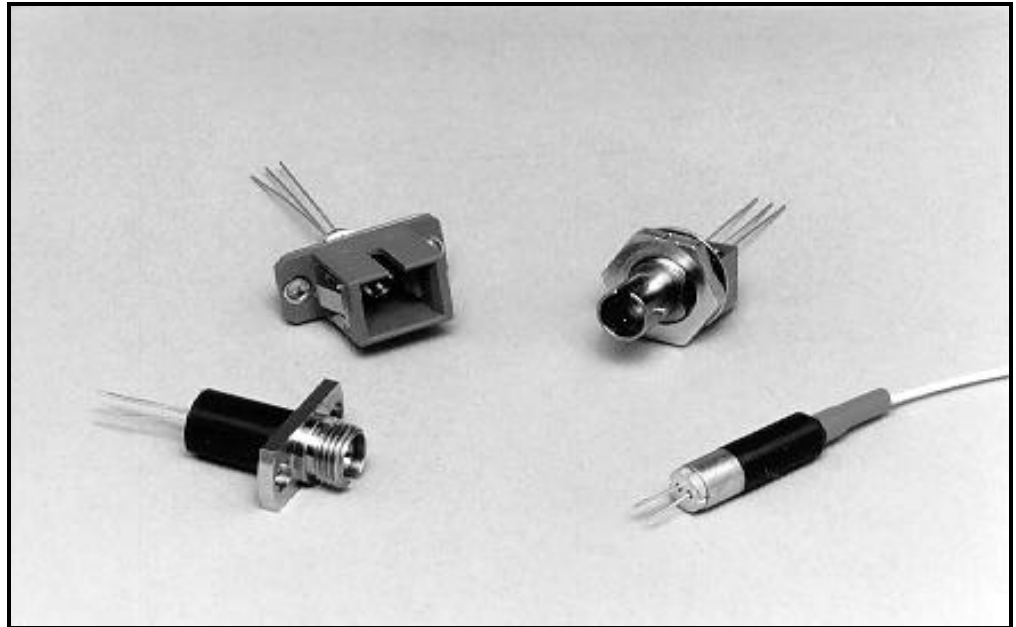


PD-LD Inc. offers 1300nm and 1550nm Edge Emitting LEDs, ELEDs, in ready-to-use fiber coupled packages, including FC, ST and SC receptacles as well as fiber-pigtailed units. These ELED devices have been packaged for optimal coupling into 9/125um optical fiber for use in singlemode fiber optic applications. The semiconductors inherently fast rise and fall time make them ideal for high bandwidth applications. The wide optical spectrum, 60nm FWHM is the ideal non-coherent light source for many noise sensitive applications.

The InGaAsP ELED's offered by PD-LD are of proven design and manufacture. The 1300nm units are backward compatible with those applications previously using devices offered by Agilent (HP), OKI and JDSUniphase. The 1310 nm units typically couple 8 to 10uW into SMF while 1550nm can couple 40uW typical.

All PD-LD ELED's incorporate a hermetically sealed semiconductor mounted in a TO can sub-assembly. These subassemblies are micro-positioned to various lens assemblies depending upon the package style and desired coupling efficiency. Fiber pigtailed devices are available with

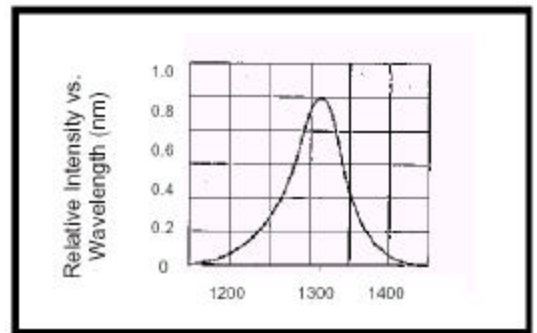


**Features**

- High reliability InGaAsP Diode
- Compact, robust receptacle & coax fiber-coupled package

**Applications**

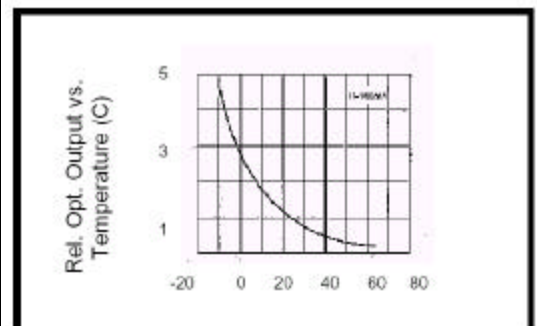
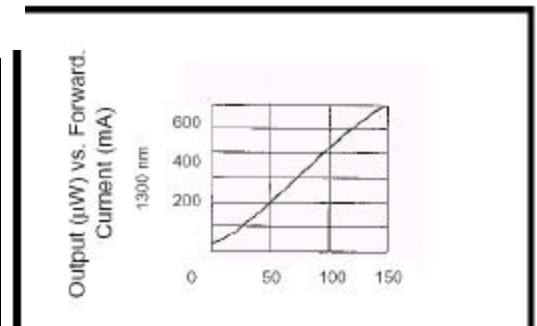
- Fiberoptic communications systems
- Analog Transmission
- Ethernet Networking



Typical ELED Characteristics

**Performance Specifications**

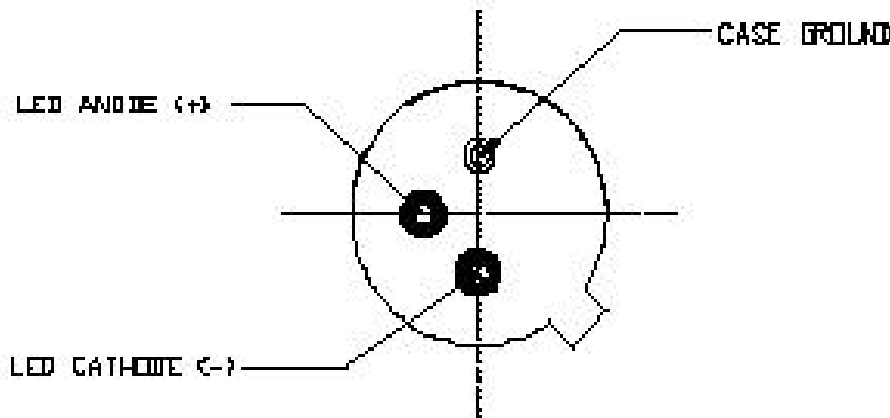
InGaAsP ELEDs@25 C, 100mA Center Wavelength 1300 or 1550+/- 30nm, Spectral Width 60nm typ. 100nm max.				
PD-LD Part No.	Fiber Coupled Power (uw)		Package Style	Mounting Features
	Min.	Typ.		
PE13W0051FCA-0-0-01	5	8	Pigtailed FC/PC Connector	Co-Axial Bracket available
PE13W010ST71-Q-0	10	15	Receptacle ST Style	PC Board Mountable
PE15E0251FCA-0-0-01	25	50	Pigtailed FC/PC connector	Co-axial Bracket Available
PE15E040FC21-N-0	40	50	Receptacle FC Style	Board Mountable
PE15E0501FCA-0-0-01	50	75	Pigtailed FC/PC Connector	Co-Axial Bracket Available



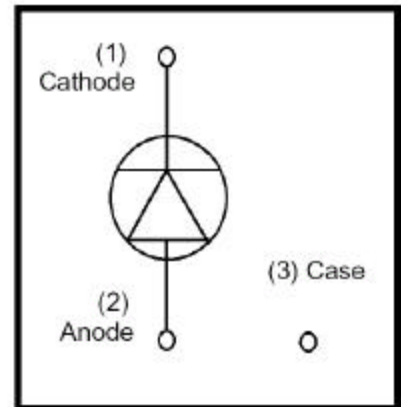
<sup>1</sup>Examples only; most device/package combinations

**Physical Dimensions (mm)**

A press-fit panel mount is available; see ordering information.

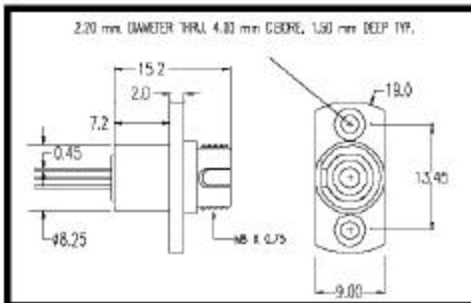


**Pin Assignment**

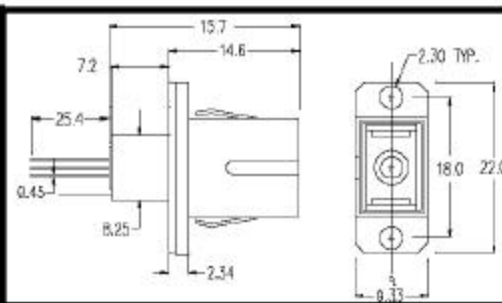


1310 ELED Pinout

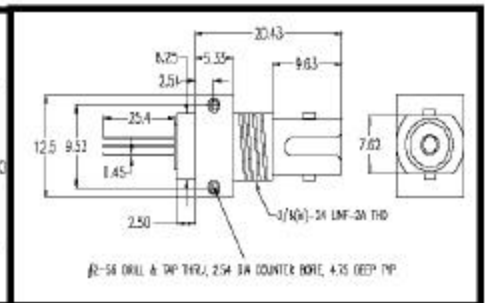
**FC Receptacle**



**SC Receptacle**



**ST Receptacle**



**Ordering Information**

**ELEDs Pigtailed**

**PEWWWPPPFCCB-0-V-LL**

**E = Edge Emitting LED**  
**WWW=Wavelength and Pin-out**

**1300nm:13W**  
**1550nm:15E**

**F = Fiber Type**  
1 = 9/125 SMF  
2 = 50/125 MMF  
3 = 62.5/125 MMF  
4 = 100/140 MMF  
9 = Customer Supplied

**B = Bracket Type**  
A = None  
B = Panel Mount  
C = Board Mount

**RRR=Receptacle Type**  
FC1=FC Panel mount  
FC2=FC Board mount  
SC1=SC Panel mount only  
SC2=SC Panel/board mount  
ST7=ST low profile  
ST8=ST high profile

**O=Orientation**  
0=N/A  
A=Bracket Shipped Loose (pigtailed unit)  
Specify orientation as required

**V=Version**  
0=Standard  
Unique Codes for specific requirements

**LL = Length in meters** (01,02,0.5 ect.) (pigtailed devices only)

**CC = Connector Type** (pigtailed devices only)

**ST = ST/PC**    **SC = SCPC**    **SA=SC/APC**    **FC = FC/PC**    **FA = FC/APC**    **FU = FC/UPC**    **OO = No Connector**  
**TA = ST/APC**    **SA = SC/APC**    **FA = FC/APC**    **D4 = D4**    **BC = Biconic**

**Receptacle ELEDs**

**PEWWWPPRRRF-O-V**

**PPP = Fiber-Coupled Power**

**005 = 5uW**    **015 = 15uW**  
**008 = 8uW**    **020 = 20uW**  
**010 = 10uW**    **050 = 50uW**

### 1550nm ELED Pin-Out and Receptacle Rotation Options

